



宁波赛鼎电器有限公司
Ningbo Saiding Electric Appliance Co.,Ltd

地址: 浙江省慈溪市周巷镇云城村枫叶路999号
Add: No.999 Yangye road, Yuncheng Village, zhoudang Town, Cixi City, Zhejiang Province, china
Tel:0086-574-63309999
Fax:0086-574-63333353
Email: susan@saidingelectric.com / sam@saidingelectric.com
sharon@saidingelectric.com
Http://www.cn-saiding.com



SAIDING
ELECTRIC APPLIANCE
Product catalog [2021]



www.cnsaiding.com



SAIDING • COMPANY PROFILE

Ningbo Saiding Electrical Appliance Co.,Ltd is a comprehensive intergrating R&D,manufacture.Our main products are hair dryer,hot air styler,hair straightrener,hair curling iron,with customers from more than 40 countries and Regions.

Located in Ningbo,Zhejiang,one of the top three home appliance manufacturing bases in China.Itis 65km away from ningbo international airport. It's 65 km away from ningbo Beilun interantional container wharf.

Saiding is Certified with the international ISO 9001:2008 quality assurance standard,Member of BSCI.All products are with GS/CE/EMC/ROHS approval for European market .

Saiding take the "quality is lift" as its production standard and purpose.

Saiding Welcome all OEM/ODM customers from the world to visit our factory for the win-win business cooperation.



HIGH-PRECISION FROM
PROFESSIONAL QUALITY

SAIDING
赛鼎

**SAIDING
ELECTRICAL**



SD-510 ▲

Professional Digital Hair Straightener

- Max temperature: 230℃
- 25x120mm Ceramic Coating plate
- 220-240V50/60Hz60W

SD-622 ▲

LED curling iron

- SD-622-1/-2/-5---Φ 19mm/Φ 25mm/Φ 32mm curling tong
- SD-622-3---Φ 13-25MM conical iron
- ON/OFF button power and "+" "-" buttons for temperature control
- LED display provide temperature:
•120℃-130℃.....200℃
- AC220-240V50/60Hz, 25W

SD-820 ▲

Professional Reaction hair dryer

- DC Motor
- Through human body response
- 220-240V50/60Hz1800-2200W

**SAIDING' S
OVERVIEW**





SD-812

Travel/Mini hair dryer

- Single voltage:220V-240V,50/60Hz,1000W
- DC Motor
- 0-1-2Speed & heat settings
- With Concentrator Nozzle
- Hanging loop
- Packing:24 pcs/ctn
- Box Measure:12.7X7X19.5cm
- Carton Size:44.5X40X27cm
- G.W./N.W.:8.9kgs / 8.3kgs
- Qty/20'FT:13488 pcs
- Qty/40'FT:27984 pcs
- Qty/40'HQ:33984 pcs



More details



SD-823 SD-823B

Travel hair dryer

- Single voltage:AC220V-240V,50/60Hz,1200W
- AC110-120V,50/60Hz,Maximum power:1200W
- Dual voltage:AC 110-130V,50/60Hz,Maximum power:1200W
- DC Motor
- 0- I - II Speed & heat settings
- With Concentrator Nozzle
- Foldable Handle
- Packing:20 pcs/ctn
- Box Measure:13x8.5x23.5 cm
- Carton Size:44.1X27.6X49.4
- G.W./N.W.:9.5kgs / 8.5 kgs
- Qty/20'FT:9320 pcs
- Qty/40'FT: 19000pcs
- Qty/40'HQ:22660pcs



More details



SD-826

Home-use hair dryer

- 220V-240V, 50/60Hz, 1800W-2200W
- DC Motor
- 2 Speed & 3 heat settings
- Cool Shot Function
- With Concentrator Nozzle
- Optional accessories:diffuser
- Hanging loop
- Indicate LED light
- Removable Filter Cover
- Optional: Ionic Function
- Packing:12 pcs/ctn
- Box Measure:22x9.5x26.5cm
- Carton Size:59x28x46cm
- G.W./N.W.:11kgs /10kgs
- QTY/20'FT: 3816pcs
- QTY/40'FT: 7920pcs
- QTY/40'HQ:9288pcs



More details



SD-828 SD-828B

Home-use hair dryer

- Single Voltage:AC220-240V,50/60Hz,2200W
- AC110-130V,50/60Hz,Max power:1400W
- Dual voltage:AC220-240V,50/60Hz, 1800W
- DC Motor
- 0- I - I Speed & heat settings
- Cool Shot Function
- With Concentrator Nozzle
- Optional: diffuser
- Hanging loop
- Optional:Ionic Function
- Packing:12 pcs/ctn
- Box Measure:25x9x14.5cm
- Carton Size:56X26.5X31cm
- G.W./N.W.:7.8kgs / 7.2kgs
- Qty/20'FT: 7290pcs
- Qty/40'FT: 15130 pcs
- Qty/40'HQ:18370 pcs



More details



SD-829

Home-use hair dryer

- 220V-240V, 50/60Hz, 1800W-2200W
- DC Motor
- 2 Speed & 3 heat settings
- Cool Shot Function
- With Concentrator Nozzle
- Optional accessories: diffuser
- Hanging loop
- 360°swivel cord
- Removable Filter Cover
- Optional: Ionic Function
- Packing: 12 pcs/ctn
- Box Measure: 23x10x28cm
- Carton Size: 47.6x31.6x58.5 cm
- G.W./N.W.: 1.1 kgs / 10 kgs
- Q'ty/20'FT: 3900 pcs
- Q'ty/40'FT: 7920 pcs
- Q'ty/40'HQ: 9288 pcs



More details



SD-880

BLDC HAIR DRYER

- AC220V-240V, 50/60Hz, 1800W
- High speed BLDC Motor
- Strong airflow : 18M/S 110000 RPM/MINUTES
- Light weight
- 35 speed & heat settings
- Cool shot button
- On/off button
- With Concentrator Nozzle
- LED light indication with indicator of speed and temperature levels
- Detachable grid
- 2000 hours life time
- Optional : Diffuser
- Packing: 20 pcs/ctn
- Box Measure: 21x7x24cm
- Carton Size: 36.5x25.5x43.5 cm
- G.W./N.W.: 12.5 kgs / 12 kgs
- Q'ty/20'FT: 13500 pcs
- Q'ty/40'FT: 28000 pcs
- Q'ty/40'HQ: 34000 pcs



More details



SD-835

Professional hair dryer

- 220V-240V, 50/60Hz, 2400W
- AC Motor
- 2 Speed & 3 heat settings
- Cool Shot Function
- With Concentrator Nozzle
- Optional accessories : diffuser
- Hanging loop
- Removable Filter Cover
- Optional: Ionic Function
- Packing: 12 pcs/ctn
- Box Measure: 23x10x28cm
- Carton Size: 47.6x31.6x58.5cm
- G.W./N.W.: 1.1 kgs/10kg
- Q'ty/20'FT: 3900 pcs
- Q'ty/40'FT: 7920 pcs
- Q'ty/40'HQ: 9288 pcs



More details



SD-837

Professional hair dryer

- 220V-240V, 50/60Hz, 2200W
- AC Motor
- 2 Speed & 3 heat settings
- Cool Shot Function
- With Concentrator Nozzle
- Optional accessories: diffuser
- Hanging loop
- Removable Filter Cover
- Optional: Ionic Function
- Packing: 12 pcs/ctn
- Box Measure: 23x10x28cm
- Carton Size: 47.6x31.6x58.5 cm
- G.W./N.W.: 1.1 kgs / 10kgs
- Q'ty/20'FT: 3900 pcs
- Q'ty/40'FT: 7920 pcs
- Q'ty/40'HQ: 9288 pcs



More details





SD-801

Home-use hair dryer

- 220V-240V, 50/60Hz, 1600W-2000W
- DC Motor
- 2 Speed & 3 heat settings
- Cool Shot Function
- With Concentrator Nozzle
- Optional accessories: diffuser
- Hanging loop
- Indicate LED light
- Removable Filter Cover
- Optional: Ionic Function
- Packing: 12 pcs/ctn
- Box Measure: 22x9.5x26.5 cm
- Carton Size: 59x28x46 cm
- G.W./N.W.: 1.1 kgs/1.0 kgs
- QTY/20'FT: 4416 pcs
- QTY/40'FT: 8832 pcs
- QTY/40'HQ: 10728 pcs



SD-802

Home-use hair dryer

- 220V-240V, 50/60Hz, 1800W-2200W
- DC Motor
- 2 Speed & 3 heat settings
- Cool Shot Function
- With Concentrator Nozzle
- Optional accessories: diffuser
- Hanging loop
- Removable Filter Cover
- With Ionic ON/OFF Switch & Ionic LED light
- Optional: Ionic Function
- Packing: 12 pcs/ctn
- Box Measure: 23x10x28 cm
- Carton Size: 47.6x31.6x58.4cm
- G.W./N.W.: 10.6 kgs/9.8kgs
- QTY/20'FT: 3816pcs
- QTY/40'FT: 7920pcs
- QTY/40'HQ: 9288 pcs



SD-803

Home-use hair dryer

- 220V-240V, 50/60Hz, 1600W-2000W
- DC Motor
- 0 - I - II - Cool Speed & heat settings
- Cool Shot Function
- With Concentrator Nozzle
- Optional accessories: diffuser
- Hanging loop
- Optional: Ionic Function
- Packing: 12 pcs/ctn
- Box Measure: 20x9.5x26.5 cm
- Carton Size: 41.6x30.1x55.4 cm
- G.W./N.W.: 1.0 kgs/9kgs
- QTY/20'FT: 4836 pcs
- QTY/40'FT: 10032 pcs
- QTY/40'HQ: 11760 pcs



SD-806

Home-use hair dryer

- 220V-240V, 50/60Hz, 1600W-2000W
- DC Motor
- 2 Speed & 3 heat settings
- Cool Shot Function
- With Concentrator Nozzle
- Optional accessories: diffuser
- Hanging loop
- Removable Filter Cover
- Optional: Ionic Function
- Packing: 12 pcs/ctn
- Box Measure: 23x10x28 cm
- Carton Size: 47.6x31.6x58.4 cm
- G.W./N.W.: 11 kgs / 10 kgs
- QTY/20'FT: 3816pcs
- QTY/40'FT: 7920pcs
- QTY/40'HQ: 9288 pcs





SD-808

Home-use hair dryer

- 220V-240V, 50/60Hz, 1800-2200W
- DC Motor
- 2 Speed & 3 heat settings
- Cool Shot Function
- With Concentrator Nozzle
- Optional accessories: diffuser
- Hanging loop
- Removable Filter Cover
- Optional: Ionic Function
- Packing: 12 pcs/ctn
- Box Measure: 23x10x28 cm
- Carton Size: 47.6x31.6x58.4 cm
- G.W./N.W.: 10.6 kgs / 9.8kgs
- QTY/20'FT: 3816 pcs
- QTY/40'FT: 7920 pcs
- QTY/40'HQ: 9288 pcs



More details



SD-816

Foldable handle

- 220V-240V, 50/60Hz, 1800-2200W
- DC Motor
- 2 Speed & 3 heat settings
- Cool Shot Function
- With Concentrator Nozzle
- Optional accessories: diffuser
- Hanging loop
- Removable Filter Cover
- Optional: Ionic Function
- Packing: 24 pcs/ctn
- Box Measure: 24.5x95x13 cm
- Carton Size: 58.8x50.2x28 cm
- G.W./N.W.: 22 kgs/20 kgs
- QTY/20'FT: 8356 pcs
- QTY/40'FT: 16968 pcs
- QTY/40'HQ: 19152 pcs



More details



SD-819

Professional reaction hair dryer

- Induction control power on or off by hand
- 220V-240V, 50/60Hz, 1800W-2200W
- DC Motor
- 2 Speed & 3 heat settings
- Cool Shot Function
- With Concentrator Nozzle
- Optional accessories: diffuser
- Hanging loop
- Indicate LED light
- Removable Filter Cover
- Optional: Ionic Function
- Packing: 12 pcs/ctn
- Box Measure: 22x9.5x26.5 cm
- Carton Size: 59x28x46 cm
- G.W./N.W.: 11 kgs/10 kgs
- QTY/20'FT: 3816 pcs
- QTY/40'FT: 7920 pcs
- QTY/40'HQ: 9288 pcs



More details



SD-820

Home-use hair dryer

- 220V-240V, 50/60Hz, 1800W-2200W
- DC Motor
- 2 Speed & 3 heat settings
- Cool Shot Function
- With Concentrator Nozzle
- Optional accessories: diffuser
- Hanging loop
- Indicate LED light
- Removable Filter Cover
- Optional: Ionic Function
- Packing: 12 pcs/ctn
- Box Measure: 22x9.5x26.5 cm
- Carton Size: 59x28x46 cm
- G.W./N.W.: 11 kgs / 10 kgs
- QTY/20'FT: 3816 pcs
- QTY/40'FT: 7920 pcs
- QTY/40'HQ: 9288 pcs



More details





SD-701

Professional hair dryer

- 220V-240V, 50/60Hz, 1800W-2200W
- AC Motor
- 2 Speed & 3 heat settings
- Cool Shot Function
- With Concentrator Nozzle
- Optional accessories: diffuser
- Hanging loop
- Removable Filter Cover
- Optional: Ionic Function
- Packing: 12 pcs/ctn
- Box Measure: 23x10x28 cm
- Carton Size: 62x28.5x48 cm
- G.W./N.W.: 10.5 kgs/8.5 kgs
- QTY/20'FT: 3960 pcs
- QTY/40'FT: 7920 pcs
- QTY/40'HQ: 9612 pcs

More details



SD-702

Professional hair dryer

- 220V-240V, 50/60Hz, 1800W-2200W
- AC Motor/DC Motor
- 2 Speed & 3 heat settings
- Cool Shot Function
- With Concentrator Nozzle
- Optional accessories: diffuser
- Hanging loop
- Removable Filter Cover
- Optional: Ionic Function
- Packing: 12 pcs/ctn
- Box Measure: 22.5x9.8x27.5cm
- Carton Size: 46.5x31x57cm
- G.W./N.W.: 10.5kgs / 9.8kgs
- QTY/20'FT: 4020 pcs
- QTY/40'FT: 8400 pcs
- QTY/40'HQ: 9600pcs

More details



SD-805 / SD-805B

Travel hair dryer

- Single Voltage: AC220-240V, 50/60Hz, 1200-1600W
- AC110-130V, 50/60Hz, Max power: 1200W
- Dual voltage: AC220-240V, 50/60Hz, 1200W
- DC Motor
- 0 - II Speed & heat settings
- Cool Shot Function
- With Concentrator Nozzle
- Foldable Handle
- Hanging loop
- Optional: Ionic Function
- Packing: 20 pcs/ctn
- Box Measure: 12x8x20 cm
- Carton Size: 25.6x41.6x42.4 cm
- G.W./N.W.: 9.5 kgs / 8.5 kgs
- QTY/20'FT: 12540 pcs
- QTY/40'FT: 25680 pcs
- QTY/40'HQ: 30100 pcs

More details



SD-807

Travel hair dryer

- 220V-240V, 50-60Hz, 1200-1400W
- DC Motor
- 0 - II Speed & heat settings
- Cool Shot Function
- With Concentrator Nozzle
- Foldable Handle
- Hanging loop
- Packing: 20 pcs/ctn
- Box Measure: 12x7.5x21.5 cm
- Carton Size: 39.1x25.6x45.4 cm
- G.W./N.W.: 9.5 kgs / 8.5 kgs
- QTY/20'FT: 12320 pcs
- QTY/40'FT: 25520 pcs
- QTY/40'HQ: 29920 pcs

More details





SD-809 / SD-809B

Travel hair dryer

- Single voltage:AC220V-240V,50/60Hz,1000W-1200W
- AC110-130V,50/60Hz,Maximum power:1000W
- Dual voltage:AC 110-130V,50/60Hz
Maximum power:1000W
- DC Motor
- 0- I - II Speed & heat settings
- With Concentrator Nozzle
- Foldable Handle
- Packing:20 pcs/ctn
- Box Measure:11X7.5X16 cm
- Carton Size:39.1x23.6x34.4 cm
- G.W./N.W.:7.6 kgs/ 6.6 kgs
- QTY/20'FT: 17800 pcs
- QTY/40'FT: 35620 pcs
- QTY/40'HQ: 41900 pcs

More details



SD-822

Travel hair dryer

- Single Voltage:AC 220-240V,50/60Hz,
1200-1600W
- Dual Voltage:AC110-120V,50/60Hz,1200W
- AC220-240V,50/60Hz,1600W
- DC Motor
- 0- I - II Speed&Heat settings
- With Concentrator Nozzle
- Foldable Handle
- Hanging loop
- Optional:Ionic Function
- Packing:20pcs/ctn
- Box Measure:12x8x20cm
- Carton Size:25.6x41.6x42.4cm
- G.W./N.W.:9.5kgs/8.5kgs
- QTY/20'FT:12540 PCS
- QTY/40'FT:25680 PCS
- QTY/40'HQ:30100PCS

More details



SD-822C

Travel hair dryer

- Single Voltage:AC 220-240V,50/60Hz,
1200-1600W
- Dual Voltage:AC110-120V,50/60Hz,1200W
- AC220-240V,50/60Hz,1600W
- Cool shot button
- DC Motor
- 0- I - II Speed&Heat settings
- With Concentrator Nozzle
- Foldable Handle
- Hanging loop
- Optional:Ionic Function
- Packing:20pcs/ctn
- Box Measure:12x8x20cm
- Carton Size:25.6x41.6x42.4cm
- G.W./N.W.:9.5kgs/8.5kgs
- QTY/20'FT:12540 PCS
- QTY/40'FT:25680 PCS
- QTY/40'HQ:30100PCS

More details



SD-917

One-step hair dryer and styler

- 220V-240V 50/60Hz 1200W
- DC Motor
- Ceramic Coating
- 0-C-1-2 Speed & heat settings
- Cool shot function
- Ionic Function for choice
- 360 swivel cord
- Hanging loop
- Packing:10pcs/ctn
- Box Measure:39x15x10.5cm
- Carton Size:54.1x31.6x41.4cm
- G.W./N.W.:7.5kgs/6.5kgs
- QTY/20'FT:4410pcs
- QTY/40'FT:8940pcs
- QTY/40'HQ:10150pcs

More details





SD-927

One step hair dryer and styler

- Dual voltage:AC 110-130V,50/60Hz,Maximum power:1200W
- AC 220-240V, 50/60Hz, Maximum power:1300W
- DC Motor
- Ceramic Coating
- 0-C-1-2 Speed & heat settings
- Cool shot function
- Ionic Function for choice
- 360 swivel cord
- Hanging loop
- Packing:10pcs/ctn
- Box Measure:39x15x10.5cm
- Carton Size:54.1x31.6x41.4cm
- G.W./N.W:7.5kg/6.5kgs
- QTY/20'FT:4410pcs
- QTY/40'FT:8940pcs
- QTY/40'HQ:10150pcs



More details



SD-901

Hot Air Style

- 220V-240V, 50/60Hz, 800W-1000W
- DC Motor
- 0- I - II Speed & heat settings
- Cool shot & lock function
- Ionic Function for choice
- 360 swivel cord
- Hanging loop
- Optional: 10 attachments
- A.Wave muzzle
- B.Curling iron
- C.Point roll brush
- D.Big roll brush
- E.Half brush
- F.Shrinkable style brush
- G.Duckbill
- H.Small shrinkable style brush
- I.Big Shrinkable style brush
- K.Big roll brush
- L.Duckbill



More details



SD-905

Travel hair dryer

- Hot Air Style
- 220V-240V, 50/60Hz,1000W
- DC Motor
- 0- I - II Speed & heat settings
- Cool shot & lock function
- Ionic Function for choice
- 360 swivel cord
- Hanging loop
- Optional:10 attachments
- A.Wave muzzle
- B.Curling iron
- C.Point roll brush
- D.Big roll brush
- E.Half brush
- F.Shrinkable style brush
- G.Duckbill
- H.Small shrinkable style brush
- I.Big Shrinkable style brush
- K.Big roll brush
- L.Duckbill



More details



SD-909

Hot air brush

- 220-240V 50/60Hz, 1000W
- DC motor
- 0-1-2 speed&heat settings
- Cool shot function
- Ionic function for choice
- 360 swivel cord
- Hanging loop
- Optional: 11 attachments

- A.Wave nuzzle
- B.Curling iron
- C.Point roll brush
- D.Big roll brush
- E.Half brush
- F.Shrinkable style brush
- G.Duckbill
- H.Small shrinkable style brush
- I.Big shrinkable style brush
- K.Big roll brush
- L.Duckbill

More details



SD-903

Rotating hot air style

- 220-240V 50/60Hz 800-1000W
- 0-1-2-C speed&heat settings
- Overload protect function to prevent hair to be strained
- 360 Swivel cord
- Release button for attachment
- Soft switch to control attachment left/right turning
- Two accessories Φ40mm & Φ50mm

- Packing: 10pcs/ctn
- Box Measure: 15.4x8.4x32cm
- Carton size: 43.6x32.4x34.4cm
- G.W./N.W.: 5.2kgs / 4.6kgs
- QTY/20'FT: 5250pcs
- QTY/40'FT: 10872pcs
- QTY/40'HQ: 12750pcs

More details



SD-908

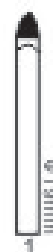
Rotating hot air style

- 220-240V 50/60Hz 800-1000W
- 0-C-1-2 speed&heat settings
- Overload protect function to prevent hair to be strained
- 360 Swivel cord
- Release button for attachment
- Soft switch to control attachment left/right turning
- Two accessories Φ40mm&Φ50mm

- Packing: 10pcs/ctn
- Box Measure: 15.4x8.4x32cm
- Carton Size: 43.6x32.4x34.4cm
- G.W./N.W.: 5.2 kgs/4.6kgs
- QTY/20'FT: 5250 pcs
- QTY/40'FT: 10872pcs
- QTY/40'HQ: 12750pcs

More details



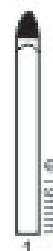


SD-601

Hair curling iron

- AC110-240V,50/60Hz,25W
- PTC heat or wire heater
- Optional: Chrome or ceramic coating
- Tong diameter: 19mm
- Accessory:Brush for choice
- Max temperature:180℃
- LED indication
- ON/OFF switch
- 360°swivel cord
- QTY/CTN: 24 pcs
- G.W.:9.5 kgs
- N.W.:8.5 kgs
- Gift box dimension(LxWxH): 33x7.5x5 cm
- Carton dimension(LxWxH): 34.6x31.6x32.4cm
- QTY/20'FT:18960 pcs
- QTY/40'FT:39288 pcs
- QTY/40'HQ:46056 pcs

More details

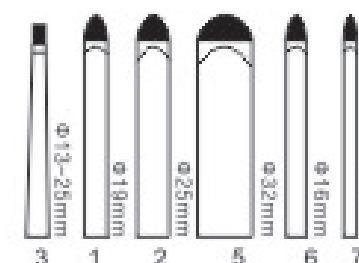


SD-602

Hair curling iron

- AC110-240V,50/60Hz,25W
- PTC heat or wire heater
- Optional: Chrome or ceramic coating
- Tong diameter: 19mm
- Accessory:Brush for choice
- Adjustable temperature control:90-180℃
- LED indication
- ON/OFF switch
- 360°swivel cord
- QTY/CTN:24pcs
- G.W.:10.5kgs
- N.W.:9.5kgs
- Gift box dimension(LxWxH):34.5x8x5 cm
- Carton dimension(LxWxH):36x33.5x31.5cm
- QTY/20'FT:17664 pcs

More details

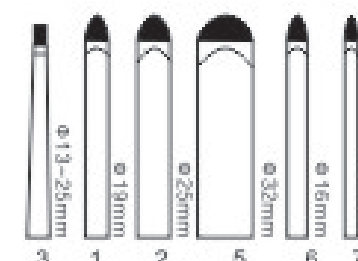


SD-603

Hair curling iron

- SD-603-1/2/5- Φ19mm/ Φ25mm/ Φ32mm curling tong
- SD-603-3-Φ13-25mm conical iron
- AC110-240V,50/60Hz,25W
- PTC heat or wire heater
- Optional:Chrome or ceramic coating
- Tong diameter:19mm,25mm,32mm, 13mm-25mm/conical barrel
- Accessory:Brush for choice
- Max temperature:180℃
- LED indication
- ON/OFF switch
- 360°swivel cord
- QTY/CTN:24 pcs
- G.W.:9.5 kgs
- N.W.:8.5 kgs
- Gift box dimension(LxWxH):34.5x8x5 cm
- Carton dimension(LxWxH):36.1x33.6x32.4cm
- QTY/20'FT:17088 pcs
- QTY/40'FT:35400 pcs
- QTY/40'HQ:41520 pcs

More details



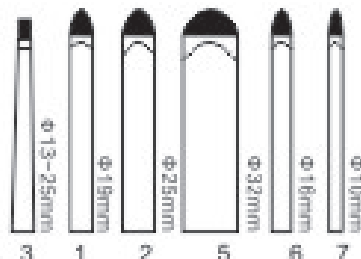
SD-605

Hair curling iron

- SD-605-1/2/5- Φ19mm/ Φ25mm/ Φ32mm curling tong
- SD-605-3-Φ13-25mm conical iron
- AC110-240V,50/60Hz,25W
- PTC heat or wire heater
- Optional:Chrome or ceramic coating
- Tong diameter:19mm,25mm,32mm, 13mm-25mm/conical barrel
- Accessory:Brush for choice
- Adjustable temperature control:90-180℃
- LED indication
- ON/OFF switch
- 360°swivel cord
- QTY/CTN: 24 pcs
- G.W.:10.5 kgs
- N.W.:9.5 kgs
- Gift box dimension(LxWxH): 34.5x8x5 cm
- Carton dimension(LxWxH): 36x33.5x31.5cm
- QTY/20'FT:17664pcs
- QTY/40'FT:35352 pcs
- QTY/40'HQ:42936 pcs

More details





SD-606

Hair curling iron

- SD-606-1/2/5-Φ19mm/Φ25mm/Φ32mm curling tong
- SD-606-3-Φ13-25mm conical iron
- AC110-240V,50/60Hz,25W
- PTC heat or wire heater
- Optional:Chrome or ceramic coating
- Tong diameter:19mm,25mm,32mm,13mm-25mm/conical barrel
- Accessory:Brush for choice
- Adjustable temperature control:90-180°C
- LED indication
- ON/OFF switch
- 360°swivel cord
- QTY/CTN:24 pcs
- G.W.:9.5 kgs
- N.W.:8.5 kgs
- Gift box dimension(LxWxH):34.5x8x5 cm
- Carton dimension(LxWxH):36.1x33.6x32.4cm
- QTY/20' FT:17088pcs
- QTY/40' FT:35400 pcs
- QTY/40' HQ:41520 pcs

More details

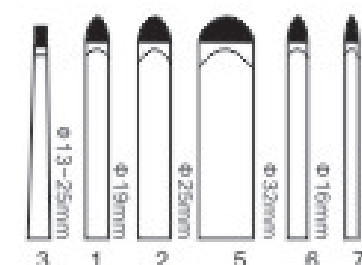


SD-609

Spiral hair curling iron

- 19mm advanced ceramic coating barrel
- Max temperature:180°C(+/-20°C)
- Fast heat up-ready in 90 seconds
- Spring clip
- ON/OFF switch
- LED indication
- 360°swivel cord
- QTY/CTN: 24 pcs
- G.W.: 9.5 kgs
- N.W.: 8.5kgs
- Gift box dimension(LxWxH): 36x7x5 cm
- Carton dimension(LxWxH): 37.6x29.6x32.4 cm
- QTY/20'FT: 18312 pcs
- QTY/40'FT: 37992 pcs
- QTY/40'HQ: 44664 pcs

More details



SD-607

Hair curling iron

- SD-607-1/2/5-Φ19mm/Φ25mm/Φ32mm curling tong
- SD-617-3-Φ13-25mm conical iron
- AC110-240V,50/60Hz,25W
- PTC heat or wire heater
- Optional:Chrome or ceramic coating
- Tong diameter:19mm,25mm,32mm,13mm-25mm/conical barrel
- Accessory:Brush for choice
- Adjustable temperature control:90-180°C
- LED indication
- ON/OFF switch
- 360°swivel cord
- QTY/CTN:24 pcs
- G.W.:9.5 kgs
- N.W.:8.5 kgs
- Gift box dimension(LxWxH):34.5x8x5 cm
- Carton dimension(LxWxH):36.1x33.6x32.4cm
- QTY/20'FT:17088pcs
- QTY/40'FT:35400pcs
- QTY/40'HQ:41520pcs

More details



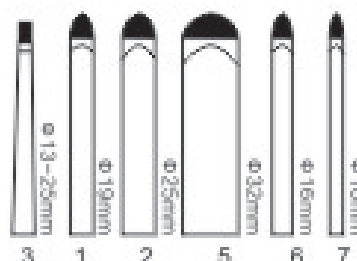
SD-611

Hair curling iron

- SD-611-1/2/5-Φ19mm/Φ25mm/Φ32mm curling tong
- SD-611-3-Φ13-25mm conical iron
- AC110-240V,50/60Hz,25W
- PTC heat or wire heater
- Optional:Chrome or ceramic coating
- Tong diameter:19mm,25mm,32mm,13mm-25mm/conical barrel
- Accessory:Brush for choice
- Max temperature:180°C
- LED indication
- ON/OFF switch
- 360°swivel cord
- QTY/CTN:24 pcs
- G.W.:9.5 kgs
- N.W.:8.5 kgs
- Gift box dimension(LxWxH): 35x8x5 cm
- Carton dimension(LxWxH): 36.6x33.6x32.4cm
- QTY/20'FT:16848pcs
- QTY/40'FT: 34920 pcs
- QTY/40'HQ: 40944 pcs

More details





SD-612

Hair curling iron

- SD-612-1/2/5-Φ19mm/Φ25mm/Φ32mm curling tong
- SD-617-3-Φ13-25mm conical iron
- AC110-240V,50/60Hz,25W
- PTC heat or wire heater
- Optional:Chrome or ceramic coating
- Tong diameter:19mm,25mm,32mm,13mm-25mm/conical barrel
- Accessory:Brush for choice
- Max temperature:180℃
- LED indication
- ON/OFF switch
- 360°swivel cord

- QTY/CTN: 24 pcs
- G.W.:9.5 kgs
- N.W.:8.5 kgs
- Gift box dimension(LxWxH): 35.5x8x5 cm
- Carton dimension(LxWxH):37.1x33.6x32.4cm
- QTY/20'FT:16632 pcs
- QTY/40'FT: 34464 pcs
- QTY/40'HQ: 40392 pcs

More details



SD-617

Hair curling iron

- SD-617-1/2/5-Φ19mm/Φ25mm/Φ32mm curling tong
- SD-617-3-Φ13-25mm conical iron
- AC110-240V,50/60Hz,25W
- PTC heater
- Optional:Chrome or ceramic coating
- Tong diameter:19mm,25mm,32mm,13mm-25mm/conical barrel
- ON/OFF button power and "+", "-" buttons for temperature control
- Three temperature setting:200℃,170℃,140℃
- LCD display provide temperature:120℃-130℃.....200℃
- Max temperature:200℃
- 360°swivel cord

- QTY/CTN:12 pcs
- G.W.:5.5kgs
- N.W.:6kgs
- Gift box dimension(LxWxH):36x8.5x5.5 cm
- Carton dimension(LxWxH):37.5x24x27.5cm
- QTY/20'FT:13620 pcs
- QTY/40'HQ: 34464 pcs

More details



SD-618

Rotating curling iron

- AC110-240V,50/60Hz, 36W
- Φ32mm hair curling tong
- Manual rotating curling comb curling iron
- LED indication
- ON/OFF switch
- Max temperature:180℃
- PTC heater
- 360°swivel cord
- Gift box dimension(LxWxH): 36x8.5x5.5 cm
- Carton dimension(LxWxH): 37.5x24x27.5 cm
- QTY/20'FT:13620 pcs
- QTY/40'HQ:27240 pcs

More details



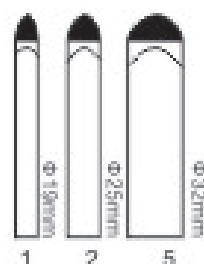
SD-619

Dual spiral hair curler

- AC220-240V,50/60Hz,40W
- PTC heater
- Ceramic coating
- Tong diameter:19mm and 32mm changable by twister cool tip
- ON/OFF button
- Max temperature:200℃
- Red power on pilot light
- 360°swivel cord
- QTY/CTN: 24 pcs
- G.W.:9.5 kgs N.W.:8.5kgs
- Gift box dimension(LxWxH): 35x8x5 cm
- Carton dimension(LxWxH):36.6x33.6x32.4cm
- QTY/20'FT:16848 pcs
- QTY/40'FT:34920 pcs
- QTY/40'HQ:34464 pcs

More details





SD-622

Hair curling iron

- SD-622-1/2/5— Φ 19mm/ Φ 25mm/ Φ 32mm curling tong
- AC110-240V, 50/60Hz, 25W
- PTC heat or wire heater
- Optional: Chrome or ceramic coating
- Tong diameter: 19mm, 25mm, 32mm, 13mm-25mm/conical barrel
- Accessory: Brush for choice
- Max temperature: 180°C
- LED indication
- ON/OFF switch
- 360° swivel cord

- QTY/CTN: 24 pcs
- G.W.: 9.5 kgs
- N.W.: 8.5 kgs
- Gift box dimension(LxWxH): 34.5x8x5 cm
- Carton dimension(LxWxH): 36.1x33.6x32.4cm
- QTY/20'FT: 17088 pcs
- QTY/40'FT: 35400 pcs
- QTY/40'HQ: 41520 pcs



More details



SD-525

Hair straightener

- 110-240V—50/60Hz 39W
- Optional: Ionic function
- ON/OFF button
- With PTC Heater
- Lockable handle
- With ceramic coating plates 25x110mm
- With 360° swivel cord sheet 8hang loop
- Packing: 24pcs/ctn
- Box Measure: 32x10x5cm
- Carton Size: 36.5x33.5x32cm
- G.W./N.W.: 9.93/9.42KGS
- QTY/20'FT: 15984PCS
- QTY/40'FT: 33216PCS
- QTY/40'HQ: 41832PCS



More details



SD-532

Hair straightener with 5 led indicators

- 110-240V—50/60Hz 55W
- With PTC Heater
- Floating plate for easy-glide
- With ceramic coating plates 25x125mm
- Auto-shut off function 60minutes
- LED indicator for 5 temperature selections:
- Temperature from 150°C to 230°C
- With 360° swivel cord sheet

- Packing: 24pcs/ctn
- Box Measure: 32x10x5cm
- Carton Size: 36.5x33.5x32cm
- G.W./N.W.: 9.93/9.42kgs
- QTY/20'FT: 15984pcs
- QTY/40'FT: 33216pcs
- QTY/40'HQ: 41832pcs



More details





SD-626

Hair brush

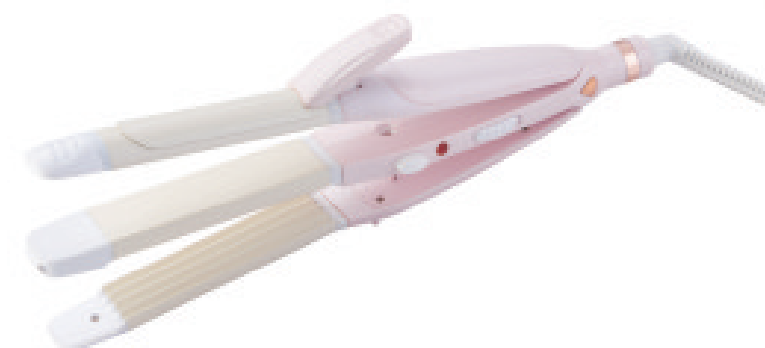
- SD-626
- Hair brush
- 110-240V—60/50Hz TBAW
- with PTC heater
- OVAL DESIGN
- with ceramic coating
- Auto-shut off function 60 minutes
- 5 adjustable heat settings : temperature from 140°C, 160°C, 180°C, 200°C, 220°C
- With 360 swivel cord sheet
- 1.8M in total 2x0.5mm Brazil Cable with Brazil plug
- Packing: 24 pcs/ctn
- Box Measure: 35X11.5X7.6cm
- Carton Size: 47.5X36.5X48CM
- G.W./N.W.: 12.5kgs / 12kgs
- QTY/20'FT: 13488 pcs
- QTY/40'FT: 27984 pcs
- QTY/40'HQ: 33984 pcs



SD-627

Coldbrush

- Thermoelectric Cooler
- DC9V, 36W
- Dual brushless Motor&Fans
- cold plate: Down to 0°C
- Nano Titanium
- High-output Ion generator
- Wet and dry hair
- Metal bristle
- Automatic 30 minute shut-off
- Dual Voltage
- on/off button
- With 360 swivel cord sheet & hang loop
- Packing: 10 pcs/ctn
- Box Measure: 30X10X7cm
- Carton Size: 36.5X31.5X22CM
- G.W./N.W.: 7.1kgs/6.6kgs
- QTY/20'FT: 13488 pcs
- QTY/40'FT: 27984 pcs
- QTY/40'HQ: 33984 pcs



SD-503

3 in 1 Straight/Curl/Crimper

- 220-240V/50/60Hz, 50W
- PTC heater
- Ceramic coating
- Tong diameter: 32mm
- LED indication
- Dry/off switch
- 360 swivel cord
- Temperature: 200°C
- Packing: 24 pcs/ctn
- Box Measure: 34x8.5x5.5cm
- Carton Size: 35.6x35.6x35.4cm
- G.W./N.W.: 10.6/10kgs
- QTY/20'FT: 14976 pcs
- QTY/40'FT: 31008 pcs
- QTY/40'HQ: 36360 pcs



SD-633

Massage straight hair comb

- AC110-240V, 50/60Hz, 50W
- PTC heater Ceramic coating
- LCD temperature display
- ON/OFF BUTTON and "+" "-" button for temperature control
- Max temperature: 230°C, adjustable
- 360° swivel cord
- Packing: 24 pcs/ctn
- Box Measure: 31.5x9.5x5.3cm
- Carton Size: 33.4x33.1x40.4cm
- G.W./N.W.: 15.12/12.03kgs
- QTY/20'FT: 19200 pcs
- QTY/40'FT: 39768 pcs
- QTY/40'HQ: 46608 pcs



SD-508

Mini Hair straightener



- Ceramic coating plate size:17x63mm
- AC110-240V,50/60Hz,25W
- Ceramic coating plate
- PTC heater
- Temperature:180 °C
- Led Indicator

- Packing:30pcs/ctn
- Box measure:43.5x27.5x17.5cm
- Carton Size:10.6/9.6KGS
- G.W./N.W.:10.6/9.6KGS
- QTY/20'FT:40560PCS
- QTY/40'FT:97200PCS
- QTY/40'HQ:114000PCS



SD-508W

Mini hair crimper



- Cremic coating crimper plates
- 110-240V~60/50Hz 55W
- With PTC heater
- Lockable handle
- Floating plate for easy glide
- With ceramic coating plates 50X110mm
- Auto-shut off function 60 minutes
- LED Display with led indicator for 9
- Temperature slections:
Temperature from 150 °C to 230 °C
- With 360 swivel cord sheet &hang loop



SD-519

Mini Hair straightener



- Ceramic coating plate size:25x65mm
- AC110-240V,50/60Hz, 25W
- PTC heater
- Temperature:180 °C
- Led Indicator

- Packing:30pcs/ctn
- Box measure:43.5x27.5x17.5cm
- Carton Size:10.6/9.6KGS
- G.W./N.W.:10.6/9.6KGS
- QTY/20'FT:40560PCS
- QTY/40'FT:97200PCS
- QTY/40'HQ:114000PCS



SD-519W

Mini hair crimper



- Cremic coating crimper plates
- Ceramic coating plate size:25x65mm
- AC110-240V,50/60Hz, 25W
- PTC heater
- Temperature:180 °C
- Led Indicator

- Packing:30pcs/ctn
- Box measure:43.5x27.5x17.5cm
- Carton Size:10.6/9.6KGS
- G.W./N.W.:10.6/9.6KGS
- QTY/20'FT:40560PCS
- QTY/40'FT:97200PCS
- QTY/40'HQ:114000PCS





SD-509

Hair straightener

- 110-240V~50/60Hz 35W
- With PTC heater
- Lockable handle
- Floating plate for easy-glide
- With ceramic coating plates 47x77mm
- On/Off button
- With 360 swivel cord sheet&hang loop

- Packing:24pcs/ctn
- Box Measure:27.7x9x4.8cm
- Carton Size:30.4x29.3x38.4cm
- G.W./N.W.:8.6/8KGS
- QTY/20'FT:19200pcs
- QTY/40'FT:39768pcs
- QTY/40'HQ:46608pcs



SD-510

Professional Slim Digital Display hair straightener

- 110-240V~50/60Hz 60W
- With PTC Heater
- Lockable handle
- Floating plate for easy-glide
- With ceramic coating plates 25x110mm
- Auto-shut off function 60minutes
- Digital temperature control from 150°C to 230°C (With digital temperature display)
- With 360swivel cord sheet &hang loop

- Packing:24pcs/ctn
- Box Measure:32x10x5cm
- Carton Size:36.5x33.5x32cm
- G.W./N.W.:9.93/9.42KGS
- QTY/20'FT:15984PCS
- QTY/40'FT:33216PCS
- QTY/40'HQ:41832PCS



SD-510A

Slim Hair straightener with 6 led indicators

- 110-240V~50/60Hz 60W
- With PTC Heater
- Lockable handle
- Floating plate for easy-glide
- With ceramic coating plates 25x110mm
- Auto-shut off function 60minutes
- LED indicator for 6 temperature selections:
- Temperature from 155°C to 230°C
- With 360swivel cord sheet &hang loop

- Packing:24pcs/ctn
- Box Measure:32x10x5cm
- Carton Size:36.5x33.5x32cm
- G.W./N.W.:9.93/9.42KGS
- QTY/20'FT:15984PCS
- QTY/40'FT:33216PCS
- QTY/40'HQ:41832PCS



SD-511

Hair straightener

- 110-240V~50/60Hz 35W
- Optional Ionic function
- ON/OFF button
- With PTC Heater
- Lockable handle
- Floating plate for easy-glide
- With ceramic coating plates 25x110mm
- With 360swivel cord sheet &hang loop

- Packing:24pcs/ctn
- Box Measure:31.5x8x5cm
- Carton Size:36.5x33.5x32cm
- G.W./N.W.:9.55/9.04KGS
- QTY/20'FT:19200PCS
- QTY/40'FT:39768PCS
- QTY/40'HQ:46608PCS



SD-513

Professional Digital Display hair straightener



- 110-240V~50/60Hz 50W
- With PTC Heater
- Optional: Ionic function
- Lockable handle
- Floating plate for easy-glide
- With ceramic coating plates 25x110mm
- Auto-shut off function 60minutes
- Digital temperature control from 150°C to 230°C
- (With digital temperature display)
- With 360swivel cord sheet & hang loop

- Packing: 24pcs/ctn
- Box Measure: 32x10x5cm
- Carton Size: 33.5x33.5x32cm
- G.W./N.W.: 9.93/9.42KGS
- QTY/20'FT: 15984PCS
- QTY/40'FT: 33216PCS
- QTY/40'HQ: 41832PCS



SD-513A

Hair straightener with 6 led indicators



- 110-240V~50/60Hz 50W
- With PTC Heater
- Optional: Ionic function
- Lockable handle
- Floating plate for easy-glide
- With ceramic coating plates 25x110mm
- Auto-shut off function 60minutes
- LED indicator for 6 temperature selections: Temperature from 155°C to 230°C
- With 360swivel cord sheet & hang loop

- Packing: 24pcs/ctn
- Box Measure: 32x10x5cm
- Carton Size: 36.5x33.5x32cm
- G.W./N.W.: 9.93/9.42KGS
- QTY/20'FT: 15984PCS
- QTY/40'FT: 33216PCS
- QTY/40'HQ: 41832PCS



SD-513B

Hair straightener



- 110-240V~50/60Hz 35W
- Optional: Ionic function
- ON/OFF button
- With PTC Heater
- Lockable handle
- Floating plate for easy-glide
- With ceramic coating plates 25x110mm
- With 360swivel cord sheet & hang loop

- Packing: 24pcs/ctn
- Box Measure: 32x10x5cm
- Carton Size: 36.5x33.5x32cm
- G.W./N.W.: 9.93/9.42KGS
- QTY/20'FT: 15984PCS
- QTY/40'FT: 33216PCS
- QTY/40'HQ: 41832PCS



SD-515

Hair straightener



- 110-240V~50/60Hz 39W
- Optional: Ionic function
- ON/OFF button
- With PTC Heater
- Lockable handle
- With ceramic coating plates 25x110mm
- With 360swivel cord sheet & hang loop

- Packing: 24pcs/ctn
- Box Measure: 32x10x5cm
- Carton Size: 36.5x33.5x32cm
- G.W./N.W.: 9.93/9.42KGS
- QTY/20'FT: 15984PCS
- QTY/40'FT: 33216PCS
- QTY/40'HQ: 41832PCS



SD-515W

Hair crimper



- Zigzag plates for creating zigzag waves
- 110-240V~50/60Hz 39W
- Optional: Ionic function
- ON/OFF button
- With PTC Heater
- Lockable handle
- With ceramic coating plates 25x110mm
- With 360° swivel cord sheet & hang loop

- Packing: 24pcs/ctn
- Box Measure: 32x10x5cm
- Carton Size: 36.5x33.5x32cm
- G.W./N.W.: 9.93/9.42KGS
- QTY/20'FT: 15984PCS
- QTY/40'FT: 33216PCS
- QTY/40'HQ: 41832PCS



SD-518

Professional Digital hair straightener



- 110-240V~60/50Hz 82W
- With PTC heater
- Lockable handle
- Floating plate for easy glide
- With ceramic coating plates 50X110mm
- Auto-shut off function 60 minutes
- LED Display with led indicator for 9
- Temperature selections:
Temperature from 150°C to 230°C
- With 360° swivel cord sheet & hang loop



SD-518A

Hair straightener with 6 led indicators



- 110-240V~50/60Hz 82W
- With PTC Heater
- Optional: Ionic function
- Lockable handle
- Floating plate for easy glide
- With ceramic coating plates 50x110mm
- Auto-shut off function 60minutes
- LED indicator for 6 temperature selections:
Temperature from 155°C to 230°C
- With 360° swivel cord sheet & hang loop

- Packing: 24pcs/ctn
- Box Measure: 32x10x5cm
- Carton Size: 36.5x33.5x32cm
- G.W./N.W.: 9.93/9.42KGS
- QTY/20'FT: 15984PCS
- QTY/40'FT: 33216PCS



SD-520

Professional Digital hair straightener



- 110-240V~60/50Hz 82W
- With PTC heater
- Lockable handle
- Floating plate for easy glide
- With ceramic coating plates 50X110mm
- Auto-shut off function 60 minutes
- LED Display with led indicator for 9
- Temperature selections:
Temperature from 150°C to 230°C
- With 360° swivel cord sheet & hang loop





SD-516-1

2 in 1 hair straightener with comb

- 220-240V, 50/60Hz, 64W
- 30X110mm ceramic coating tube with comb
- PTC heater
- On/Off button and "+" , "-" button
- LED display provide temperature: 120°C - 140°C , , , , , 220°C
- Max temperature: 220°C

- Different plates for optional:
SD-516-1: 2 in 1 hair straightener with comb
SD-516-2: 2 in 1 hair straightener with clip
SD-516-3: 2 in 1 hair straightener

- 360°swivel cord
- QTY/CTN: 24pcs
- Box meas: 33x6x7.5cm
- carton meas: 50x34.5x24.5cm
- QTY/20'FT: 11520 pcs
- QTY/40'FT: 23760 pcs
- QTY/40'HQ: 25200 pcs



SD-517-3

2 in 1 hair straightener

- 220-240V, 50/60Hz, 50W
- 30X110mm ceramic coating tube with comb
- PTC heater
- On/Off button
- Hanging loop
- Max temperature: 200°C
- 360°swivel cord

- Different plates for optional:
SD-517-1: 2 in 1 hair straightener with comb
SD-517-2: 2 in 1 hair straightener with clip
SD-517-3: 2 in 1 hair straightener

- QTY/CTN: 24pcs
- Box meas: 33x6x7.5cm
- carton meas: 50x34.5x24.5cm
- QTY/20'FT: 11520 pcs
- QTY/40'FT: 23760 pcs
- QTY/40'HQ: 25200 pcs



SD-516A-2

2 in 1 hair straightener with clip

- 220-240V, 50/60Hz, 64W
- 30X110mm ceramic coating tube with comb
- PTC heater
- On/Off button
- Hanging loop
- Max temperature: 200°C
- 360°swivel cord

- Different plates for optional:
SD-516A-1: 2 in 1 hair straightener with comb
SD-516A-2: 2 in 1 hair straightener with clip
SD-516A-3: 2 in 1 hair straightener

- QTY/CTN: 24pcs
- Box meas: 33x6x7.5cm
- carton meas: 50x34.5x24.5cm
- QTY/20'FT: 11520 pcs
- QTY/40'FT: 23760 pcs
- QTY/40'HQ: 25200 pcs



SD-517A-3

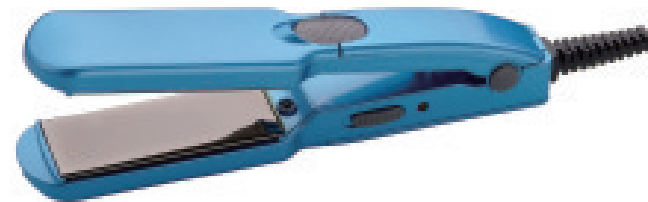
2 in 1 hair straightener with comb

- 220-240V, 50/60Hz, 50W
- 30X110mm ceramic coating plates
- PTC heater
- On/Off button
- Hanging loop
- Max temperature: 200°C
- 360°swivel cord

- Different plates for optional:
SD-517A-1: 2 in 1 hair straightener with comb
SD-517A-2: 2 in 1 hair straightener with clip
SD-517A-3: 2 in 1 hair straightener

- QTY/CTN: 24pcs
- Box meas: 33x6x7.5cm
- carton meas: 50x34.5x24.5cm
- QTY/20'FT: 11520 pcs
- QTY/40'FT: 23760 pcs
- QTY/40'HQ: 25200 pcs





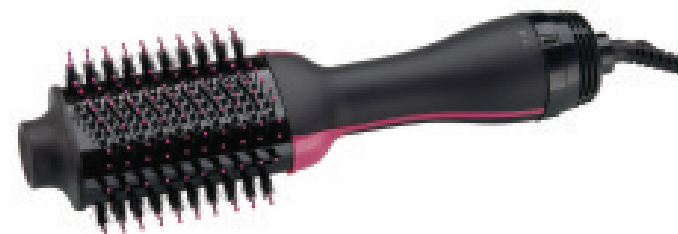
SD-531

Mini Hair straightener

- Ceramic coating plate size: 25x65mm
- AC110-240V, 50/60Hz, 25W
- PTC heater
- Temperature: 180°C
- Led Indicator

- Packing: 30 pcs/ctn
- Box measure: 43.5x27.5x17.5cm
- Carton Size: 10.6/9.6kgs
- G.W./N.W.: 10.6/9.6kgs
- QTY/20'FT: 40560 pcs
- QTY/40'FT: 97200 pcs
- QTY/40'HQ: 114000 pcs

More details



SD-907

One step hair dryer and styler

- 220V-240V 50/60Hz 1200W
- DC Motor
- Ceramic Coating
- 0-C-1-2 Speed & heat settings
- Cool shot function
- Ionic Function for choice
- 360 swivel cord
- Hanging loop
- Packing: 10 pcs/ctn
- Box Measure: 39x15x10.5cm
- Carton Size: 54.1x31.6x41.4cm
- G.W./N.W.: 7.5 kgs/6.5kgs
- QTY/20'FT: 4410 pcs
- QTY/40'FT: 8940 pcs
- QTY/40'HQ: 10150 pcs

More details



SD-831

Home-use hair dryer

- 220V-240V, 50/60Hz, 1800W-2200W
- DC Motor
- 2 Speed & 3 heat settings
- Cool Shot Function
- With Concentrator
- Hanging loop
- Optional: Ionic Function
- Packing: 12 pcs/ctn
- Box Measure: 22.5x9.8x27.5cm
- Carton Size: 46.5x31x57cm
- G.W./N.W.: 10.5kgs/9.8kgs
- QTY/20'FT: 4020 pcs
- QTY/40'FT: 8400 pcs
- QTY/40'HQ: 9600 pcs

More details



SD-832

Professional hair dryer

- 220V-240V, 50/60Hz, 2400W
- AC Motor
- 2 Speed & 3 heat settings
- Cool Shot Function
- With Concentrator
- Optional accessories: diffuser
- Hanging loop
- Removable Filter Cover
- Optional: Ionic Function
- Packing: 12 pcs/ctn
- Box Measure: 24.5x10x30cm
- Carton size: 62x31.5x26cm
- QTY/20'FT: 3240 pcs
- QTY/40'FT: 6870 pcs
- QTY/40'HQ: 8160 pcs

More details



SD-703

Professional hair dryer

- 220V-240V, 50/60Hz, 1800W-2200W
- AC Motor
- 2 Speed & 3 heat settings
- Cool Shot Function
- With Concentrator Nozzle
- Optional accessories: diffuser
- Hanging loop
- Removable Filter Cover
- Optional: Ionic Function
- Packing: 12 pcs/ctn
- Box Measure: 23x10x28 cm
- Carton Size: 62x28.5x48 cm
- G.W./N.W.: 10.5 kgs/8.5 kgs
- QTY/20'FT: 3960 pcs
- QTY/40'FT: 7920 pcs
- QTY/40'HQ: 9612 pcs

More details



SD-833

Travel hair dryer

- Single voltage: AC220V-240V, 50/60Hz, 1000W-1200W
- AC110-130V, 50/60Hz, Maximum power: 1000W
- Dual voltage: AC 110-130V, 50/60Hz
- Maximum power: 1000W
- With diffuser
- DC Motor
- 0-1-II Speed & heat settings
- With Concentrator
- Foldable Handle
- Packing: 20 pcs/ctn
- Box Measure: 11x7.5x16 cm
- Carton Size: 39.1x23.6x34.4 cm
- G.W./N.W.: 7.6 kgs / 6.6 kgs
- QTY/20'FT: 17800 pcs
- QTY/40'FT: 35620 pcs
- QTY/40'HQ: 41900 pcs

More details



SD-535

Lockable handle

- Hair Wave styler
- Ceramic coating plates
- On/off button
- LED indicator
- PTC Heater
- Packing: 24 pcs/ctn
- Box Measure: 33X12X6.5cm
- Carton Size: 49.5X34.5X41CM
- G.W./N.W.: 15.4kgs / 14.9 kgs
- Q'ty/20'FT: 9240pcs
- Q'ty/40'FT: 19200pcs
- Q'ty/40'HQ: 23304 pcs

More details



SD-812 P/01



SD-823/SD-823B P/01



SD-826 P/02



SD-828SD-828B P/02



SD-829 P/03



SD-830 P/03



SD-835 P/04



SD-837 P/04



SD-801 P/05



SD-802 P/05



SD-803 P/06



SD-806 P/06



SD-808 P/07



SD-816 P/07



SD-819 P/08



SD-820 P/08



SD-701 P/09



SD-702 P/09



SD-805/SD-805B P/10



SD-807 P/10



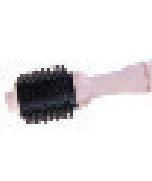
SD-809/SD-809B P/11



SD-802 P/11



SD-823C P/12



SD-817 P/12



SD-807 P/13



SD-901 P/13



SD-905 P/14



SD-909 P/15



SD-903 P/16



SD-908 P/16



SD-601 P/17



SD-602 P/17



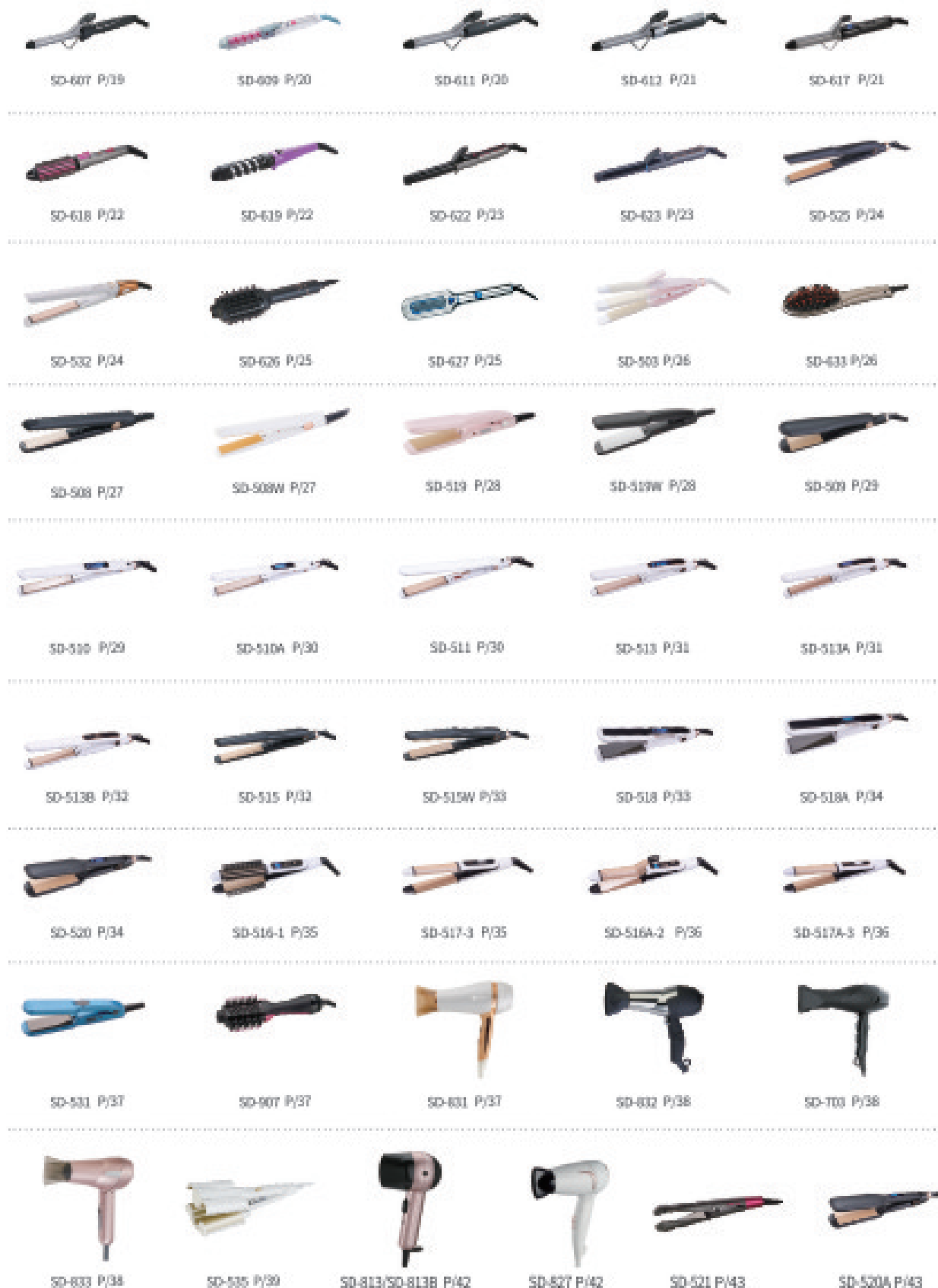
SD-603 P/18



SD-605 P/18



SD-606 P/19



with diffuser

SD-813 / SD-813B

Travel/Mini hair dryer

- Single voltage:220V-240V, 50/60Hz, 1000W-1200W
- AC110-130V,50/60Hz,Maximum power:1000W
- Dual voltage:AC110-130V/220-240V,50/60Hz,1000W
- DC Motor.
- 0-1-2Speed & heat settings
- With Concentrator Nozzle
- Hanging loop
- Packing:20 pcs/ctn
- Box Measure:13x8.5x23.5 cm
- Carton Size:44.1X27.6X49.4
- G.W./N.W.:9.5kgs/ 8.5 kgs
- QTY/20'FT: 9320 pcs
- QTY/40'FT: 19000 pcs
- QTY/40'HQ:22660 pcs



More details



SD-827

Travel hair dryer

- AC 220-240V, 50/60Hz, 1400W
- DC Motor
- 0-1-II Speed&Heat settings
- With Concentrator Nozzle
- Foldable Handle
- Hanging loop
- Optional:Ionic Function
- Packing:20pcs/ctn
- Box Measure:12x8x20cm
- Carton Size:25.6x41.6x42.4cm
- G.W./N.W.:9.5kgs/8.5kgs
- QTY/20'FT:12540pcs
- QTY/40'FT:25680pcs
- QTY/40'HQ:30100pcs



More details



SD-521

2 in 1 hair curler&straightener

- 2 in 1 hair curler&straightener with unique twisted plate
- 220-240V, 50/60Hz, 55W
- Unique twisted ceramic plates
- PTC Heater
- On/off button and "+" , "-" button
- Micro guide combs which secures hair onto the plates for fast, one pass styling
- 5 heat settings from 150 to 230 C
- QTY/CTN: 24pcs
- G.W.: 9.5kgs
- N.W.: 8.5kgs
- Gift box dimension(LxWxH): 34.5x8x5 cm
- Carton dimension(LxWxH): 36.1x33.6x32.4cm
- QTY/20'FT: 17088pcs
- QTY/40'FT: 35400pcs
- QTY/40'HQ: 41520pcs



More details



SD-520A

Hair straightener with 6 led indicators

- 110-240V—50/60Hz 82W
- With PTC Heater
- Optional: ionic function
- Lockable handle
- Floating plate for easy-glide
- With ceramic coating plates 50x110mm
- Auto-shut off function 60minutes
- LED indicator for 6 temperature selections: Temperature from 155 C to 230 C
- With 360swivel cord sheet &hang loop
- Packing: 24pcs/ctn
- Box Measure: 32x10x5cm
- Carton Size: 36.5x33.5x32cm
- G.W./N.W.: 9.93/9.42KGS
- QTY/20'FT: 15984PCS
- QTY/40'FT: 33216PCS



More details

